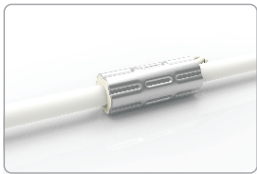


FXN - 3525 - C - SIM

Anti-wicking Ferrule



The anti-wicking ferrule is located at 115mm (± 10 mm tolerance) from the connector on the cable.

For protection against water ingress from inside of cable wire and hence damage the light.

Note:

1. Unless otherwise stated, the tolerance is ± 0.5 mm.
2. The removal of anti-wicking ferrule will void the warranty if any water ingress caused by it.

